

N COR SEC 21  
T18N, R64W

P-10"

062622

RECEIVED  
LARAMIE COUNTY  
CHEYENNE, WY.

CERTIFIED LAND CORNER RECORDATION

DESCRIPTION OF CORNER EVIDENCE FOUND, AND ORIGINAL RECORD (if known) OCT 5 PM 3 00

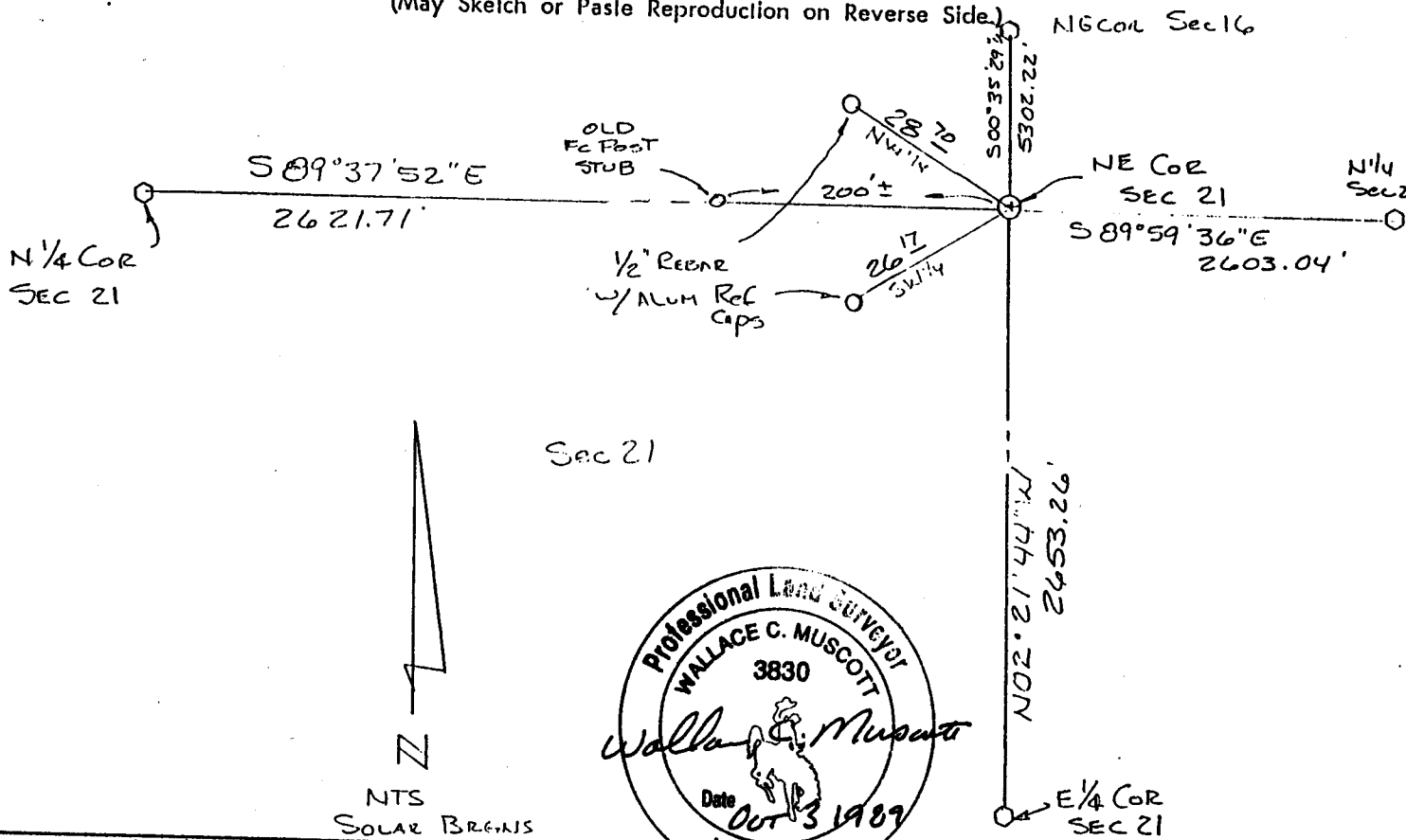
THIS CORNER IS CONSIDERED LOST. FALLS IN A HUGE BLOW  
DIRT AREA WITH NO EVIDENCE OF STONE, FENCES, OR OTHERWISE.  
NO EVIDENCE OF ORIGINAL BLM 20X14X8 SANDSTONES FOUND.  
SET BY DOUBLE PRO-RATA METHOD.

DESCRIPTION OF MONUMENT AND ACCESSORIES ESTABLISHED  
TO PERPETUATE THE ORIGINAL LOCATION OF THIS CORNER:

AT THE CALCULATED POINT FOR THIS CORNER, SET A 5/8 X 30" REBAR  
WITH A CORPS OF ENGINEERS BRASS CAP ON TOP. RAISED A MOUND OF  
STONE & REFERENCED AS SHOWN BELOW.

SKETCH, WITH COURSE AND DISTANCE TO ADJACENT CORNER IF DETERMINED IN THIS SURVEY.  
(May Sketch or Paste Reproduction on Reverse Side.)

AUG 24 1989



I, Wallace C. Muscott certify that I have carefully performed or reviewed the work done on the diagrammed corner as reported on this recordation form and approve the same.

Wallace C. Muscott 3830  
Signature of Surveyor Registration No.

STATE OF WYOMING,  
Office of Clerk and Recorder,  
County of \_\_\_\_\_

This "corner record" was filed for record on the \_\_\_\_\_ day of \_\_\_\_\_, 19\_\_\_\_, was noted on the cross-index plat and is assigned page No. \_\_\_\_\_, in book No. \_\_\_\_\_.

County Official			
Cross Index No. <u>N-13</u>	T. <u>18N</u>	R. <u>64W</u>	Mer.
_____	T. _____	R. _____	Mer.
_____	T. _____	R. _____	Mer.
_____	T. _____	R. _____	Mer.
_____	T. _____	R. _____	Mer.
_____	T. _____	R. _____	Mer.
_____	T. _____	R. _____	Mer.